

CLEAN REMOTE SPEC SHEET

Simple One touch set-up (no codes needed)

For TV only (will not work TV/DVD, TV/VCR or TV/DVD/VCR combination units)

Works over 250 brands of commercial and retail TV's

No Menu Button - So Patients and Guest cannot change settings

Hidden Battery compartment and attached door to help prevent batteries from being taken

Uses 2 AAA batteries

Will not operate with LodgeNet or On Command movie systems

PROGRAMMING INSTRUCTIONS FOR THE CLEAN REMOTE

Battery Installation:

1. Open cover: With keypad facing you, first slide dark lens cover away from you (photo A, step 1) and then lift lid upward from the back (photo A, step 2)
2. When placing AAA batteries in the compartment note the + and - symbols on the metal hinge should make contact with the corresponding + and - end of each battery (photo B).
3. Closing cover: **With keypad facing away from you** gently close cover by pressing downward (photo C, step 1) and sliding it toward the front (keypad) until it is aligned. (photo C, step 2)
4. Test remote by pressing the power button; the LED should light indicating that the batteries are in correctly. If the LED doesn't light, then the batteries are either in wrong or the batteries are bad.

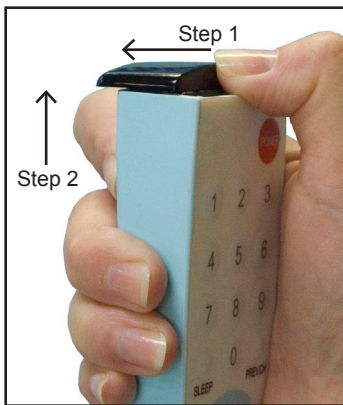


Photo A

Open with keypad facing you



Photo B

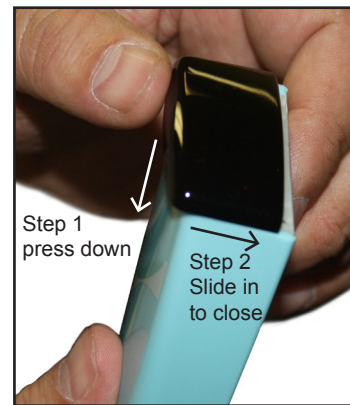


Photo C

Close with keypad facing away from you

NO CODE ENTRY/ONE STEP PROGRAMMING

For all TV's

1. Turn on the TV and point the remote toward's the television.
2. One Step programming: **Press And** firmly **Hold** down the **Setup** button, do not release. The LED will blink once and then after 7 seconds it will initiate code search. The LED will continue to blink every 2 seconds. Once your TV shuts off immediately remove your finger from the Setup button; the code automatically locks in.
3. Test the remote. If everything works, you are done. If the main functions are not working properly, you may not have an exact code match. Start again at step #1. The code search will continue where it left off.

Important Note:

If you think that you missed the code you can reset the remote back to the beginning of the code search; first press and hold the Setup button for 3 seconds and then while still pressing the Setup button down, press and hold the CC button down at the same time until the red LED light blinks quickly 3 times. You have now reset the code list back to the beginning. Go back to step 1.